

Food Stamp

For food hygiene inspection and environmental surface sampling

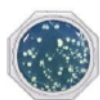
Food Stamp RODAC (Replicate Organism Detection and Counting) plates are a *simple-to-use* bacteriological method to check CCP's (Critical Control Points) within the HACCP (Hazardous Analytical Critical Control Points) for surface microbiological control. They are designed for hygiene control of different bacteria on foodstuffs and/or preparative surfaces.

General protocol

- Remove the cap and gently press the medium against the surface of sample.
- When different Food Stamps are used to sample the surface (for multiple microbe screening), press each stamp against different areas of the sample.
- Replace the cap immediately after sampling and incubate at the temperature/time specified.

General information

After use, dispose following local disposal regulations.



Food Stamp SMA Total viable count

REF: 06050-00SMA-100

Incubation time & temperature: 37 °C for 24 - 48 hours or at Room Temperature for 48 - 96 hours

Interpretation: Count all colonies grown on the surface.

Shelf life: 12 months

Storage +4-10°C



Food Stamp TGSE Staphylococcus aureus

REF: 06056-0TGSE-100

Incubation time & temperature: 37 °C for 48 hours or at room temperature for 72 - 96 hours.

Interpretation: Staphylococcus aureus forms black colonies with a milky halo. S. aureus shows a positive egg yolk reaction. Black colony with negative egg yolk reaction is not interpreted as S. aureus.

Shelf life: 6 months

Storage +4-10°C



Food Stamp SABO Fungi



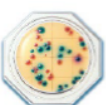
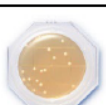
REF: 06063-0SABO-100

Incubation time & temperature: 30 °C for 48 - 72 hours.

Interpretation: Fungi develop characteristic "cotton wool" colonies that should be counted for evaluation.

Shelf life: 12 months

Storage +4-10°C

	Food Stamp MLCB Salmonella species	REF: 06750-0MLSB-100
	Incubation time & temperature: 37 °C for 24 - 48 hours. Interpretation: Salmonella forms black colonies or colonies with black center. Citrobacter may develop black colonies like Salmonella. Purple colonies are not Salmonella. Shelf life: 5 months	Storage + 4-10°C
	Food Stamp CERE Bacillus cereus	REF: 06752-0CERE-100
	Incubation time & temperature: 37 °C for 24 - 48 hours. Interpretation: <i>Bacillus cereus</i> forms white colonies with an irregular rim forming an opaque zone (positive egg yolk reaction) around the colonies and change the colour of the medium to red. Small colonies with negative egg yolk reaction are not <i>B. cereus</i> . Shelf life: 12 months	Storage + 4-10°C
	Food Stamp PDA Fungi	REF: 06754-00PDA-100
	Incubation time & temperature: 30 °C for 48 - 72 hours. Interpretation: Chloramphenicol in the medium inhibits bacterial growth, all colonies formed can be counted as Fungi. Shelf life: 12 months	Storage + 4-10°C
	Food Stamp X-SA Staphylococcus aureus	REF: 06756-00XSA-100
	Incubation time & temperature: 35 - 37 °C for 22 - 24 hours. Interpretation: <i>Staphylococcus aureus</i> forms blue smooth colonies with converging lens shape. *Coagulase-negative Staphylococcus form smaller white or blue colonies. *Bacillus sp. may form light blue and flat colonies. Shelf life: 4 months	Storage + 4-10°C
	Food Stamp X-GAL Coliform	REF: 06763-0XGAL-100
	Incubation time & temperature: 37 °C for 24 hours or at room temperature for 48 hours Interpretation: Count all blue/blue-green coloured colonies. Shelf life: 12 months	Storage + 4-10°C
	Food Stamp XM-G E.coli and coliform	REF: 06775-00XMG-100
	Incubation time & temperature: 35 °C for 18 - 22 hours. Interpretation: Count all pink/red-purple coloured colonies as Coliform bacteria. Count all blue/blue-purple coloured colonies as <i>E. coli</i> . <i>E. coli</i> O-157 do not have β-glucuronidase so it will be identified as a Coliform. Over incubation may foster growth of microorganisms other than <i>E. coli</i> and Coliform bacteria. Red colouring may be observed if the sample contains Lactobacilli which also has β-galactosidase. Shelf life: 12 months	Storage + 4-10°C
	Clean Stamp SCD Total viable count	REF: 06784-00SCD-100
	Incubation time & temperature: 30 - 35 °C for 2 - 5 days. Interpretation: Count all colonies grown on the surface. Shelf life: 12 months	Storage + 4-10°C
	Clean Stamp SCDLP Total viable count	REF: 06786-SCDLP-100
	Incubation time & temperature: 35 °C for 24 - 48 hours. Interpretation: Count all colonies grown on the surface. Shelf life: 12 months	Storage + 4-10°C

*Clean Stamps are dedicated for Environmental Microbiology testing in Pharma setting.